

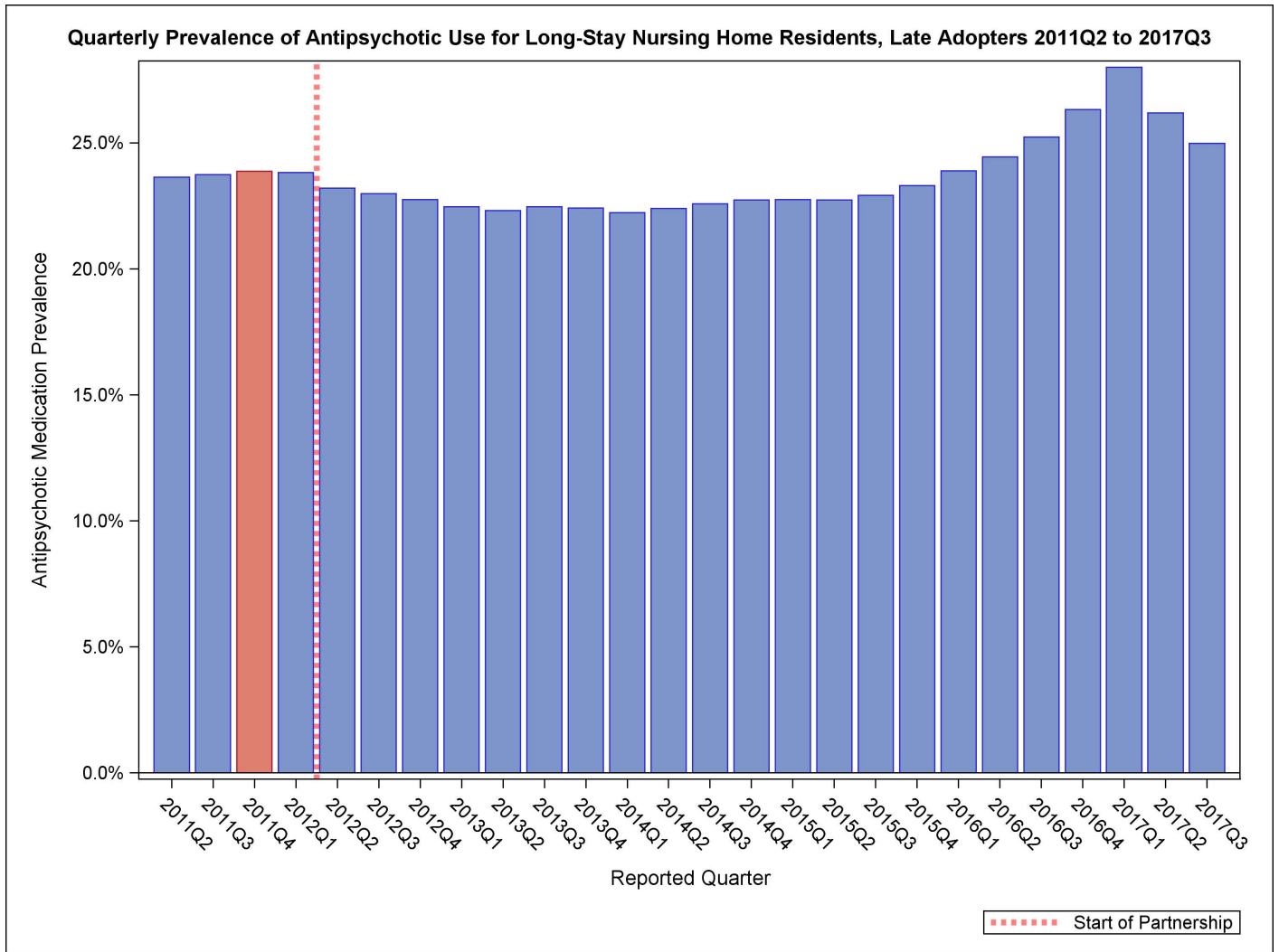
National Partnership to Improve Dementia Care in Nursing Homes: Late Adopter Data Report (January 2018)

CMS recently announced that the National Partnership met its goal of reducing the national prevalence of antipsychotic medication use in long-stay nursing home residents by 30 percent by the end of 2016. It also announced a new goal of a 15 percent reduction in those homes with currently limited reduction rates.

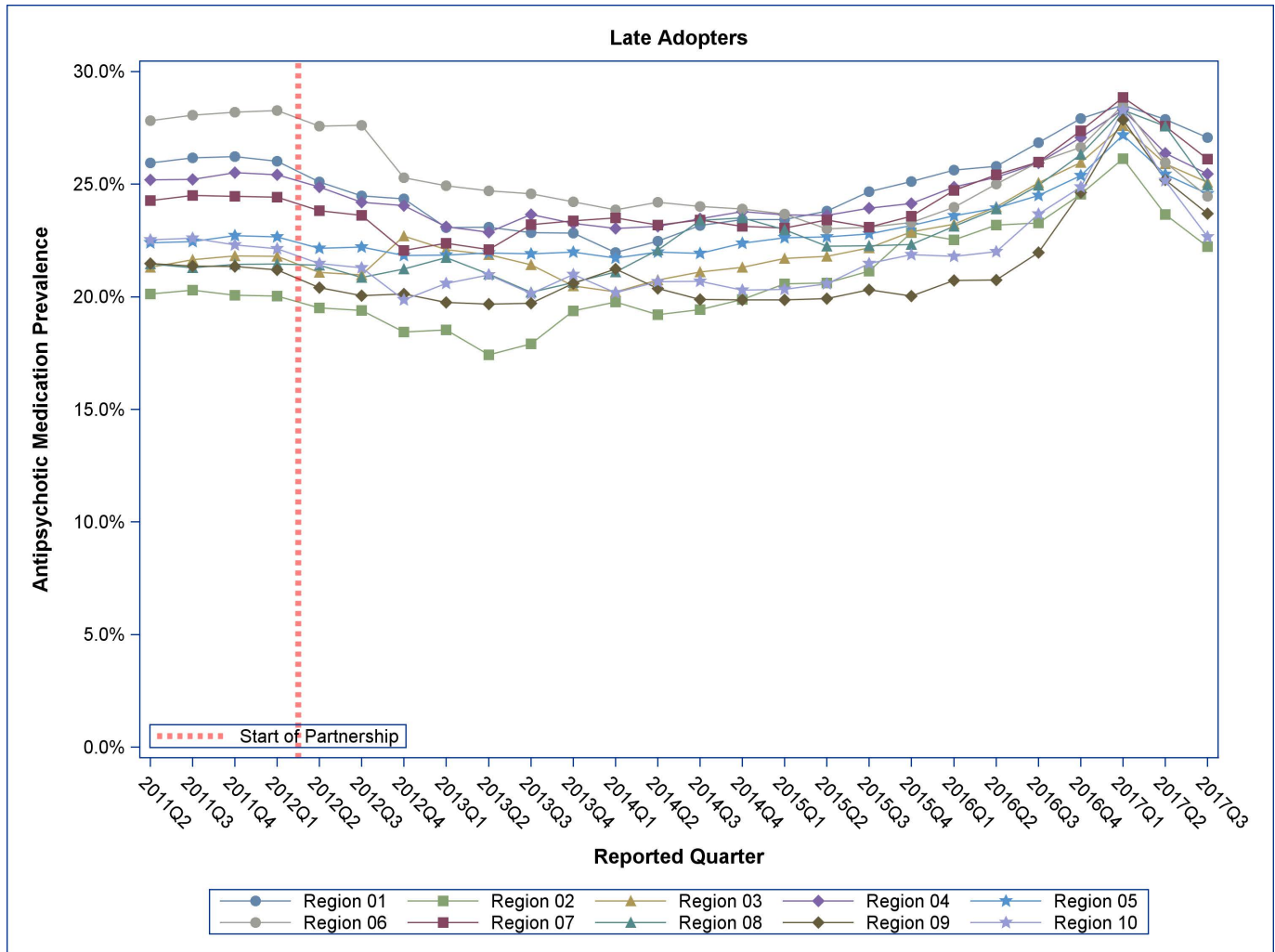
Nursing homes with low rates of antipsychotic medication use are encouraged to continue their efforts and maintain their success, while those with high rates of use are to work to decrease antipsychotic medication use by 15 percent for long-stay residents by the end of 2019. These homes have been identified as late adopters.

This quarterly data report is specific to the progress of the late adopters.

For more information on the National Partnership, please send correspondence to dnh_behavioralhealth@cms.hhs.gov.



Quarterly Prevalence of Antipsychotic Use for Long-Stay Residents, Late Adopters, CMS Regions



Late Adopters

Region	Facility Count	2011Q4	2012Q1	2012Q4	2013Q1	2013Q4	2014Q1	2014Q2	2014Q3	2014Q4	2015Q1	2015Q2	2015Q3	2015Q4	2016Q1	2016Q2	2016Q3	2016Q4	2017Q1	2017Q2	2017Q3	Percentage point difference (2011Q4-2017Q3)	% Change
National	.	23.9%	23.8%	22.8%	22.5%	22.4%	22.23	22.4%	22.6%	22.7%	22.8%	22.7%	22.9%	23.3%	23.9%	24.4%	25.2%	26.3%	28.0%	26.2%	25.0%	1.10	4.6%
Region 01	83	26.2%	26.0%	24.4%	23.1%	22.8%	21.96	22.5%	23.2%	23.4%	23.4%	23.8%	24.7%	25.1%	25.6%	25.8%	26.8%	27.9%	28.5%	27.9%	27.1%	0.84	3.2%
Region 02	41	20.1%	20.0%	18.4%	18.5%	19.4%	19.78	19.2%	19.4%	19.9%	20.6%	20.6%	21.1%	22.9%	22.5%	23.2%	23.3%	24.6%	26.1%	23.6%	22.2%	2.15	10.7%
Region 03	145	21.8%	21.8%	22.7%	22.1%	20.5%	20.23	20.8%	21.1%	21.3%	21.7%	21.8%	22.2%	22.9%	23.2%	24.0%	25.1%	26.0%	27.6%	25.9%	25.1%	3.27	15.0%
Region 04	290	25.5%	25.4%	24.1%	23.1%	23.3%	23.03	23.1%	23.5%	23.8%	23.6%	23.6%	23.9%	24.1%	24.9%	25.3%	26.0%	27.1%	28.3%	26.4%	25.5%	-0.05	-0.2%
Region 05	358	22.7%	22.7%	21.8%	21.8%	22.0%	21.73	22.0%	21.9%	22.4%	22.6%	22.7%	22.8%	23.2%	23.6%	23.9%	24.5%	25.4%	27.2%	25.4%	24.6%	1.87	8.2%
Region 06	218	28.2%	28.3%	25.3%	24.9%	24.2%	23.86	24.2%	24.0%	23.9%	23.7%	23.0%	23.1%	23.3%	24.0%	25.0%	26.0%	26.6%	28.5%	26.0%	24.5%	-3.72	-13.2%
Region 07	198	24.5%	24.4%	22.1%	22.4%	23.4%	23.51	23.2%	23.4%	23.1%	23.0%	23.4%	23.1%	23.6%	24.7%	25.4%	26.0%	27.4%	28.8%	27.6%	26.1%	1.65	6.7%
Region 08	66	21.4%	21.5%	21.2%	21.7%	20.6%	21.11	22.1%	23.4%	23.5%	23.0%	22.2%	22.3%	22.3%	23.1%	23.9%	24.9%	26.3%	28.3%	27.6%	25.0%	3.52	16.4%
Region 09	58	21.3%	21.2%	20.1%	19.7%	20.6%	21.24	20.4%	19.9%	19.9%	19.9%	19.9%	20.3%	20.0%	20.7%	20.7%	22.0%	24.6%	27.9%	25.2%	23.7%	2.35	11.0%
Region 10	51	22.3%	22.1%	19.9%	20.6%	21.0%	20.18	20.7%	20.7%	20.3%	20.3%	20.6%	21.5%	21.9%	21.8%	22.0%	23.7%	24.9%	28.3%	25.2%	22.7%	0.36	1.6%

Quarterly Prevalence of Antipsychotic Use for Long-Stay Residents, Late Adopters, States

Late Adopters

State	Facility Count	2011Q4	2012Q2	2012Q4	2013Q2	2013Q4	2014Q2	2014Q4	2015Q1	2015Q2	2015Q3	2015Q4	2016Q1	2016Q2	2016Q3	2016Q4	2017Q1	2017Q2	2017Q3	Rank in 2017Q3 (lower=better)	Percentage point difference (2011Q4-2017Q3)	% Change
ALABAMA	31	27.3%	26.5%	23.9%	22.5%	23.7%	23.6%	23.3%	23.5%	22.9%	22.8%	23.0%	24.9%	24.4%	25.4%	26.9%	28.0%	26.1%	25.9%	34	-1.45	-5.3%
ARIZONA	9	22.7%	21.7%	22.4%	24.0%	21.6%	22.4%	21.2%	21.9%	24.2%	24.1%	22.3%	24.6%	25.0%	22.3%	27.0%	28.3%	26.6%	24.0%	17	1.21	5.3%
ARKANSAS	18	26.1%	25.3%	25.5%	26.5%	23.9%	20.7%	19.0%	19.2%	19.4%	19.2%	19.8%	20.7%	21.4%	22.1%	23.5%	25.9%	23.8%	22.0%	7	-4.15	-15.9%
CALIFORNIA	42	21.6%	20.4%	19.2%	18.3%	20.0%	19.8%	19.0%	18.8%	18.2%	18.9%	19.0%	19.4%	19.2%	21.3%	23.3%	27.0%	24.2%	22.4%	9	0.83	3.8%
COLORADO	15	19.9%	20.3%	19.0%	18.9%	18.4%	22.0%	22.9%	22.7%	21.4%	23.0%	21.8%	23.7%	22.9%	24.3%	24.9%	26.1%	24.7%	24.7%	28	4.82	24.2%
CONNECTICUT	17	26.0%	25.0%	25.4%	24.4%	26.3%	26.9%	27.2%	26.4%	25.7%	26.5%	27.3%	26.7%	26.6%	27.0%	26.7%	27.6%	27.2%	25.4%	33	-0.66	-2.5%
DELAWARE	3	21.3%	22.6%	21.4%	22.5%	21.4%	20.5%	17.3%	17.3%	15.4%	13.4%	12.7%	15.5%	18.0%	22.8%	21.1%	24.0%	21.5%	19.8%	3	-1.49	-7.0%
FLORIDA	75	24.5%	23.8%	24.1%	23.6%	24.1%	24.5%	24.2%	24.4%	24.5%	24.0%	23.8%	24.4%	24.8%	25.4%	26.5%	27.2%	25.4%	24.7%	27	0.23	1.0%
GEORGIA	31	28.7%	28.0%	24.1%	22.8%	22.5%	22.5%	22.9%	24.0%	25.0%	25.4%	27.7%	27.5%	27.7%	28.5%	29.2%	31.1%	29.3%	27.9%	44	-0.76	-2.7%
HAWAII	1	12.5%	15.3%	0.0%	11.1%	10.0%	0.0%	0.0%	0.0%	0.0%	0.0%	0.0%	0.0%	0.0%	0.0%	16.7%	33.3%	0.0%	0.0%	1	-12.45	-100.0%
IDAHO	12	25.3%	25.1%	24.5%	25.3%	24.9%	26.0%	21.1%	19.7%	18.4%	16.6%	16.0%	15.9%	17.8%	20.3%	23.5%	27.1%	23.7%	21.2%	5	-4.11	-16.2%
ILLINOIS	93	25.7%	25.3%	22.9%	22.8%	22.7%	23.5%	24.1%	24.3%	24.3%	23.7%	23.7%	24.4%	24.2%	24.9%	26.0%	28.3%	26.9%	26.3%	37	0.64	2.5%
INDIANA	51	24.0%	22.9%	23.3%	22.8%	23.8%	23.2%	22.9%	22.4%	22.0%	22.1%	21.9%	23.4%	24.7%	25.3%	25.4%	27.4%	25.8%	24.4%	22	0.34	1.4%
IOWA	52	22.3%	21.7%	22.1%	21.6%	22.4%	23.7%	24.2%	23.5%	23.9%	23.0%	24.0%	25.2%	25.5%	25.6%	26.3%	27.7%	26.8%	25.0%	31	2.66	11.9%
KANSAS	59	26.1%	25.2%	20.8%	21.1%	22.1%	21.7%	22.3%	22.8%	23.3%	23.3%	23.2%	24.8%	25.6%	26.2%	27.2%	29.1%	28.2%	26.5%	38	0.42	1.6%
KENTUCKY	51	26.0%	25.2%	23.7%	23.2%	22.9%	22.7%	24.3%	24.0%	23.3%	24.2%	25.1%	24.8%	25.6%	26.5%	27.4%	28.1%	27.1%	26.7%	39	0.70	2.7%
LOUISIANA	35	29.7%	29.1%	24.0%	22.8%	24.9%	26.2%	26.8%	27.9%	24.8%	26.9%	24.2%	24.8%	27.4%	26.0%	27.4%	28.6%	26.1%	24.7%	25	-5.05	-17.0%
MAINE	12	27.2%	25.9%	23.0%	20.4%	20.6%	18.8%	24.2%	23.0%	24.2%	24.9%	24.9%	25.1%	24.1%	27.9%	30.4%	31.3%	31.2%	31.0%	47	3.79	13.9%
MARYLAND	16	19.8%	18.5%	22.3%	21.1%	18.8%	18.9%	19.8%	20.2%	18.6%	19.7%	19.9%	21.6%	23.1%	24.0%	24.5%	26.0%	24.6%	23.5%	15	3.74	18.9%
MASSACHUSETTS	30	26.7%	25.4%	26.1%	24.7%	23.8%	23.2%	22.6%	23.7%	24.7%	25.8%	25.4%	26.1%	26.2%	27.3%	28.7%	28.9%	27.9%	27.1%	41	0.39	1.5%
MICHIGAN	44	16.4%	15.8%	19.6%	19.5%	19.3%	18.8%	19.2%	20.1%	20.0%	21.6%	22.0%	21.7%	22.0%	22.9%	23.6%	26.6%	24.3%	24.3%	21	7.92	48.3%
MINNESOTA	34	19.0%	18.1%	18.4%	18.9%	19.5%	18.1%	17.6%	18.0%	17.8%	18.1%	19.9%	20.5%	20.7%	21.8%	23.1%	25.2%	23.2%	22.1%	8	3.08	16.2%
MISSISSIPPI	25	26.6%	26.6%	25.1%	25.4%	24.5%	24.6%	25.8%	25.5%	24.8%	25.8%	24.8%	26.5%	28.3%	28.7%	29.4%	30.9%	28.4%	27.4%	42	0.86	3.2%
MISSOURI	52	26.1%	25.3%	22.9%	22.7%	23.2%	22.8%	21.1%	21.1%	21.8%	21.6%	21.9%	23.1%	24.4%	25.2%	27.6%	28.8%	27.9%	26.8%	40	0.69	2.6%
MONTANA	5	21.5%	19.5%	30.8%	31.4%	24.7%	24.7%	23.2%	21.7%	19.7%	21.0%	23.8%	22.7%	23.8%	24.5%	26.5%	30.0%	27.2%	26.1%	36	4.64	21.6%
NEBRASKA	35	22.3%	22.6%	22.8%	23.7%	27.2%	25.6%	25.9%	25.5%	25.2%	25.2%	26.1%	26.2%	26.6%	27.3%	28.9%	30.1%	27.2%	26.0%	35	3.69	16.5%
NEVADA	6	20.3%	21.1%	26.4%	24.2%	24.9%	24.6%	27.5%	27.7%	28.4%	28.1%	27.3%	27.5%	28.7%	29.8%	31.6%	32.3%	34.4%	36.3%	49	16.00	79.0%
NEW HAMPSHIRE	10	25.5%	24.0%	21.4%	21.1%	21.1%	22.9%	21.9%	20.7%	19.0%	21.9%	24.7%	23.8%	25.2%	25.8%	25.7%	26.5%	24.1%	23.6%	16	-1.90	-7.4%
NEW JERSEY	13	17.9%	17.5%	17.4%	16.3%	18.4%	17.7%	18.8%	19.4%	21.0%	19.9%	23.0%	21.4%	23.1%	22.3%	22.2%	24.6%	22.3%	19.9%	4	2.00	11.2%
NEW MEXICO	11	21.7%	20.0%	21.3%	21.8%	20.4%	18.3%	16.9%	16.9%	19.1%	20.5%	22.6%	20.8%	21.0%	23.6%	25.9%	27.1%	26.2%	24.3%	20	2.61	12.0%
NEW YORK	28	21.3%	20.8%	18.9%	18.0%	19.8%	19.9%	20.4%	21.1%	21.4%	21.7%	22.8%	23.0%	23.2%	23.7%	25.7%	26.8%	24.3%	23.2%	13	1.92	9.0%
NORTH CAROLINA	31	21.4%	20.7%	22.8%	19.6%	20.7%	19.4%	19.9%	20.1%	20.2%	21.4%	21.8%	22.1%	22.8%	24.3%	24.4%	25.5%	24.0%	21.9%	6	0.48	2.2%
NORTH DAKOTA	11	21.3%	20.6%	16.4%	14.7%	15.2%	15.5%	19.2%	17.3%	19.6%	21.0%	20.4%	21.9%	23.2%	23.3%	26.1%	26.9%	28.3%	27.8%	43	6.53	30.6%
OHIO	106	25.4%	25.0%	23.3%	23.6%	23.1%	23.7%	24.3%	24.3%	24.8%	24.9%	25.4%	25.4%	25.5%	25.7%	26.6%	27.5%	25.6%	24.6%	24	-0.83	-3.3%
OKLAHOMA	50	27.3%	27.3%	27.8%	24.6%	23.2%	21.8%	22.3%	22.5%	22.2%	23.0%	23.6%	25.6%	27.2%	29.6%	29.4%	32.1%	30.4%	29.2%	46	1.83	6.7%
OREGON	14	21.5%	20.0%	17.8%	18.8%	18.9%	17.7%	17.8%	18.6%	21.1%	24.6%	24.1%	24.7%	23.0%	22.7%	24.3%	26.6%	21.7%	19.8%	2	-1.68	-7.8%
PENNSYLVANIA	74	22.3%	21.7%	21.5%	20.9%	19.8%	20.2%	20.7%	21.1%	21.1%	21.5%	22.0%	22.2%	23.2%	23.9%	24.7%	26.8%	24.9%	24.2%	19	1.94	8.7%
RHODE ISLAND	8	24.0%	23.1%	19.3%	19.5%	18.3%	16.7%	18.8%	18.6%	17.7%	18.3%	20.1%	22.4%	23.5%	22.9%	25.8%	25.8%	24.3%	24.0%	18	0.05	0.2%
SOUTH CAROLINA	19	20.7%	20.7%	22.1%	21.1%	21.1%	20.3%	21.9%	20.1%	22.0%	21.1%	21.3%	22.7%	20.5%	20.3%	24.8%	28.9%	24.8%	24.4%	23	3.74	18.1%
SOUTH DAKOTA	20	21.5%	21.3%	23.5%	24.3%	23.3%	25.3%	26.2%	25.4%	25.4%	24.5%	24.6%	24.3%	24.5%	26.2%	27.9%	30.0%	28.7%	24.8%	29	3.28	15.2%
TENNESSEE	27	30.0%	29.0%	26.7%	23.4%	25.3%	25.3%	27.0%	25.5%	24.9%	25.9%	24.7%	26.8%	28.0%	27.3%	28.3%	29.3%	26.7%	24.9%	30	-5.06	-16.9%
TEXAS	104	28.8%	28.2%	25.0%	25.4%	24.9%	25.9%	25.3%	24.3%	23.8%	22.8%	23.5%	23.8%	24.3%	25.2%	25.7%	27.4%	24.1%	22.7%	11	-6.20	-21.5%
UTAH	11	27.1%	27.1%	21.2%	21.3%	22.6%	22.4%	25.4%	26.9%	22.8%	19.9%	20.8%	23.6%	26.9%	27.2%	27.6%	31.2%	29.1%	22.8%	12	-4.30	-15.9%
VERMONT	6	25.4%	26.2%	27.1%	24.9%	21.2%	20.7%	24.1%	25.8%	26.0%	26.8%	25.5%	28.4%	29.2%	29.0%	28.9%	30.3%	34.2%	32.8%	48	7.41	29.2%
VIRGINIA	37	23.0%	21.8%	25.9%	24.7%	24.4%	24.2%	24.4%	24.7%	25.9%	25.5%	27.1%	26.9%	26.9%	27.6%	29.0%	30.1%	28.9%	28.0%	45	4.98	21.6%
WASHINGTON	25	22.3%	21.7%	18.8%	20.1%	20.3%	19.8%	21.3%	21.6%	21.3%	22.1%	23.5%	23.0%	23.5%	25.9%	25.9%	29.8%	27.8%	25.0%	32	2.71	12.1%
WEST VIRGINIA	15	20.5%	20.4%	21.0%	20.2%	15.9%	17.2%	19.2%	19.9%	20.0%	21.9%	21.9%	22.6%	23.0%	26.2%	27.0%	27.6%	25.7%	24.7%	26	4.18	20.4%
WISCONSIN	30	19.0%	18.9%	18.1%	19.0%	19.5%	18.3%	19.5%	20.8%	20.7%	20.6%	21.1%	21.5%	22.6%	23.0%	24.0%	25.1%	23.8%	22.6%	10	3.58	18.8%
WYOMING	4	16.8%	19.4%	19.4%	16.2%	20.5%	20.1%	19.1%	18.2%	18.2%	19.6%	20.2%	17.9%	18.3%	20.1%	20.7%	21.5%	27.3%	23.3%	14	6.49	38.6%